



Photo by Nippon Fishing Co., Ltd. © 2014 The Works



HOW TO BUILD WITH KEE KLAMP SAFETY COMPONENTS

KEE KLAMP FITTINGS

- ONE OF THE QUICKEST WAYS TO ASSEMBLE STRUCTURAL PIPE WORK
- CUT LABOR COSTS UP TO 70%
- 100% REUSABLE
- NO WELDING OR THREADING
- NO DRILLING OR BOLTING

Kee Klamp fittings are strong malleable iron slip-on pipe fittings with from one to five case hardened set screws to each fitting depending on the number of pipes to be joined at one point.

Kee Klamp fittings are designed to be used with standard iron (1/2" to 2") pipe available from any local plumbing or mill supply house. The fittings are galvanized making them ideal for indoor or outdoor use.

Kee Klamp fittings give unlimited scope to the engineer designer, making possible the fabrication of the unusual type of structure as well as the usual guard rails, storage racks etc. However, most structures can be designed from just two or three types of Kee Klamp fittings.

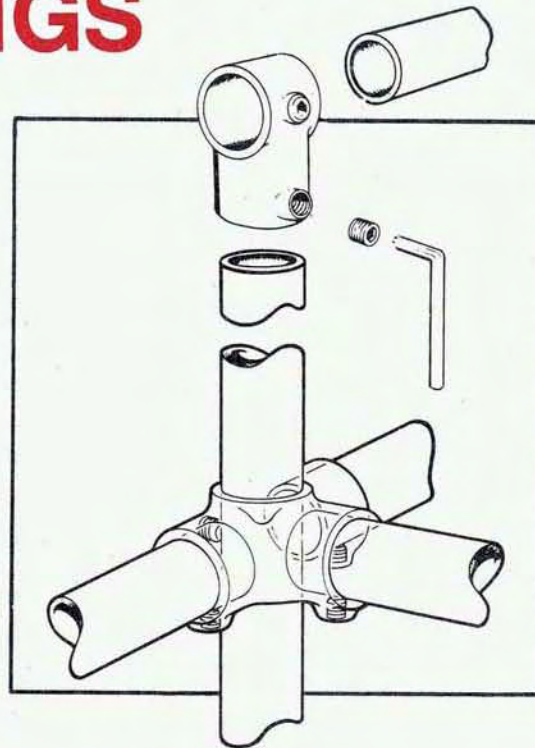
Send for **FREE 24-page catalog** on the **Kee Klamp System of Pipe Construction**



Kee Safety, Inc.

100 Stradtman Street Buffalo, New York 14206

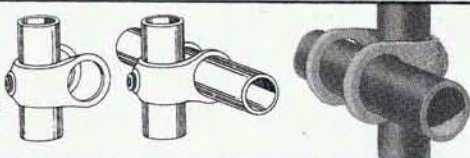
In Canada: 219 Connie Crescent, Unit 9 Concord, Ontario L4K 1L4



THE VERSATILE KEE KLAMP TYPES 17, 19, 29, 30, C-58, 66

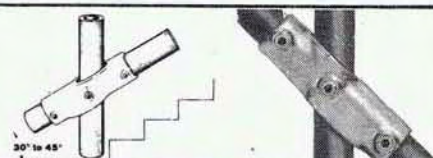
NO. 17

This fitting provides a very simple method of adding to an existing pipe structure or building new economical structures.



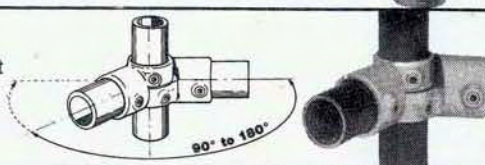
NO. 30

30°-45° cross for the intermediate rail for stairways.



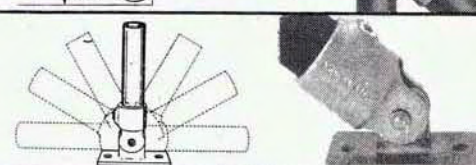
NO. 19

Adjustable side outlet tee for railings, greenhouses, awning frames, etc.



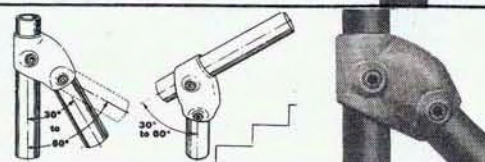
NO. C-58

Swivel Flange for floor, wall, ceiling, sloping roofs, etc. Also for bracing.



NO. 29

Single Socket Tee features adjustability from 30° to 60°, ideal for stairway railings, bracing between posts, etc.



NO. 66

Ground Sockets for setting in concrete; the posts may be either permanent, or removable if required.



No. 10



No. 16



No. 21



No. 25



No. 29



No. 45



No. C52



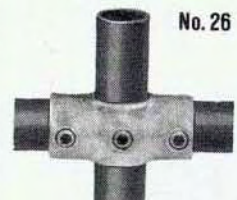
No. 62



No. 15



No. 20



No. 26



No. 40



No. 46



No. 61



No. 64



No. 68

U-1798A KEE KLAMP® SHOW DISPLAY

KEE KLAMP

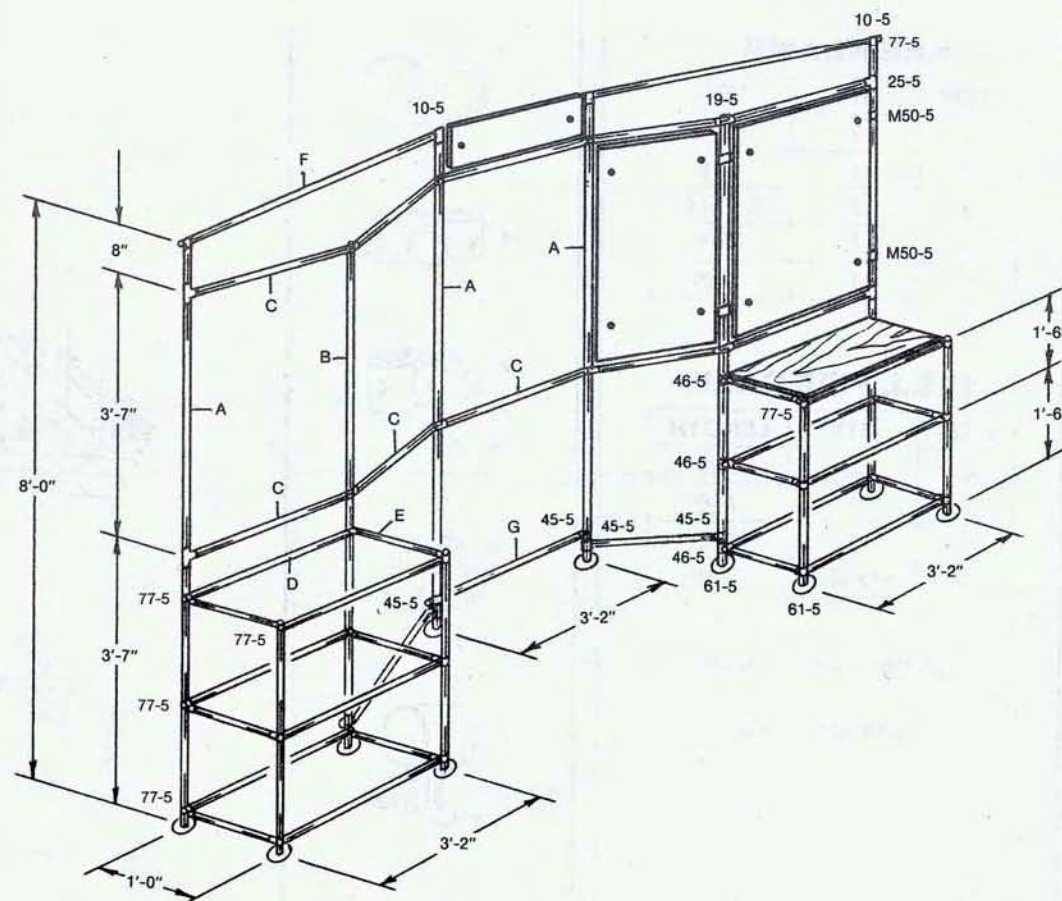
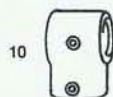
ITEM	QTY	PART
1	4	10-5
2	8	19-5
3	4	25-5
4	6	45-5
5	24	46-5
6	42	M50-5
7	10	61-5
8	12	77-5

3/4" ALUMINUM PIPE

ITEM	QTY	LENGTH
A	4	7'-11 1/4"
B	2	7'-2 7/16"
C	10	3'-0 15/16"
D	12	3'-3 1/2"
E	12	0'-8 3/8"
F	2	6'-0"
G	3	3'-3 1/16"

SHIP. WT. 200 lbs.

NOTE: Dimensions and KEE-KLAMP / Pipe sizes shown are examples. See our catalog for complete information.



Kee Klamp® is a product of Kee Safety, Inc.

U-1799A KEE KLAMP® SOLAR PANEL FRAME

KEE KLAMP

ITEM	QTY	PART
1	2	45-6
2	1	46-6
3	2	C50-66
4	1	61-6
5	1	70-6

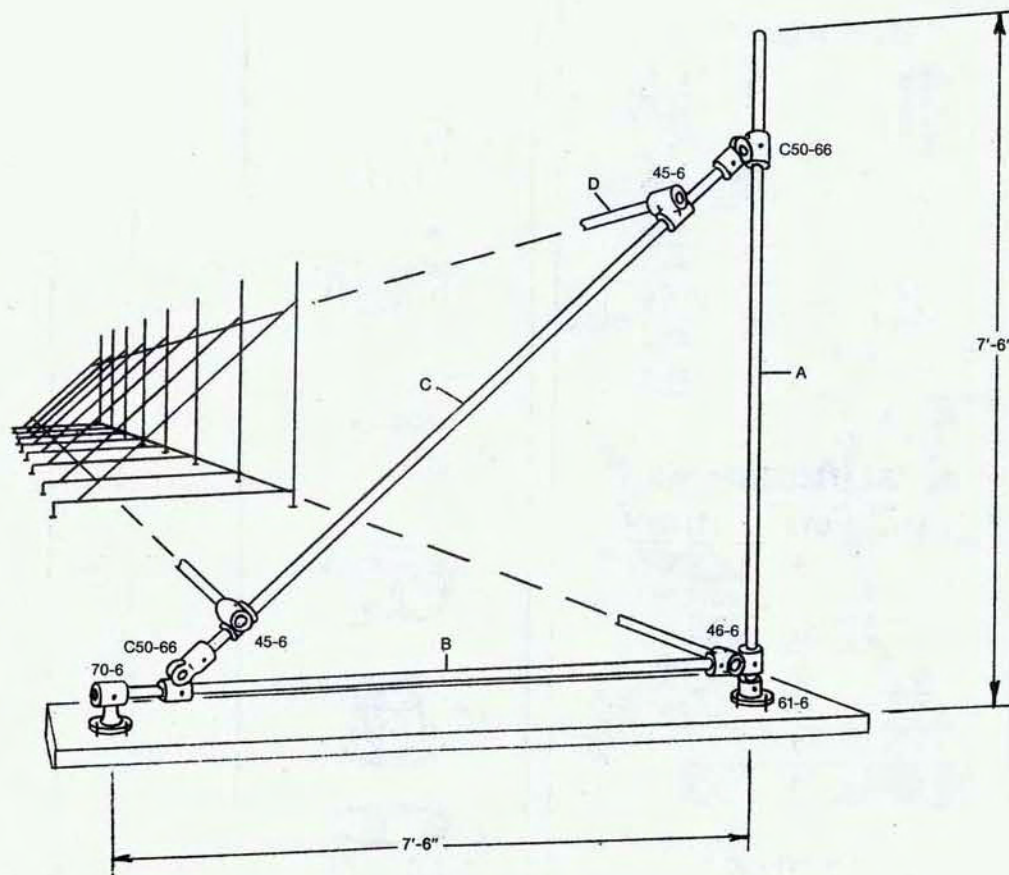
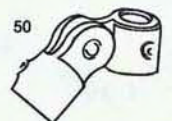
1" S.I. PIPE GALV.

ITEM	QTY	LENGTH
A	1	7'-6"
B	1	7'-6"
C	1	10'-8"
D	VARIES	21'-0"

FOR ONE FRAME ONLY

SHIP. WT. 50 lbs.

NOTE: Dimensions and KEE-KLAMP / Pipe sizes shown are examples. See our catalog for complete information.



Kee Klamp® is a product of Kee Safety, Inc.

U-1800 KEE KLAMP® GREENHOUSE

KEE KLAMP

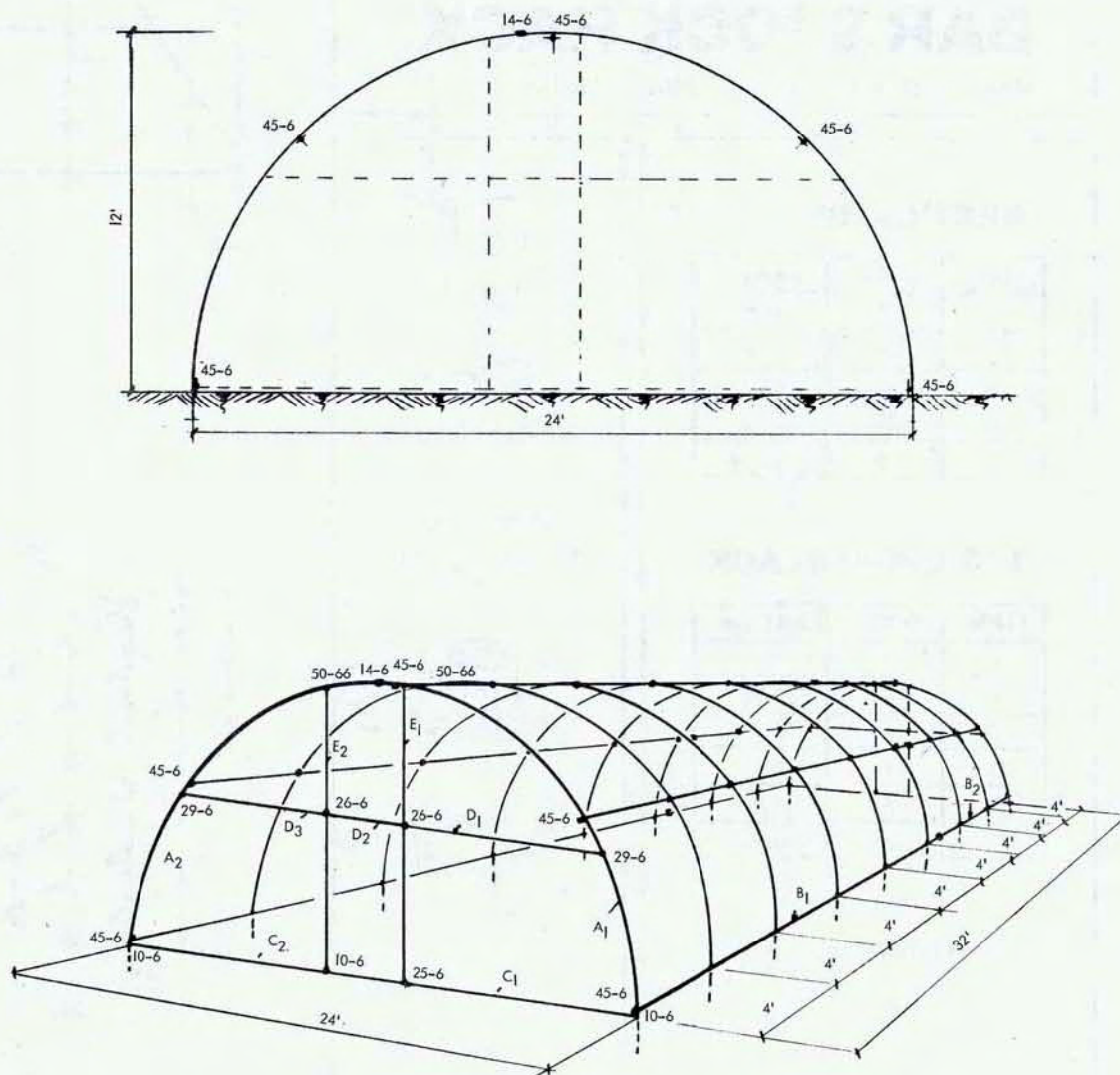
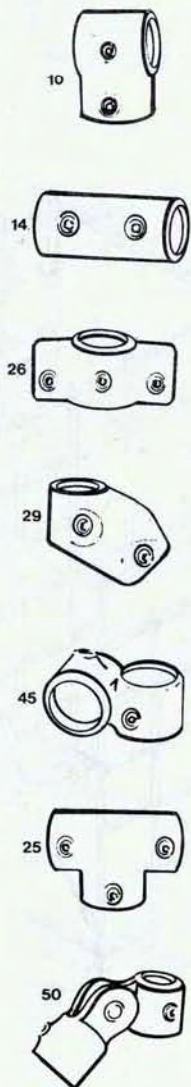
ITEM	Q'TY	PART
1	6	10-6
2	14	14-6
3	4	26-6
4	4	29-6
5	45	45-6
6	2	25-6
7	4	50-66

1" S.I. PIPE GALV

ITEM	Q'TY	LENGTH
A ₁	9	20'-10" S.P.
A ₂	9	18'-10" S.P.
B ₁	5	21'-0"
B ₂	5	11'-2"
C ₁	2	11'-0"
C ₂	2	12'-10 $\frac{5}{8}$ "
D ₁	2	8'-7"
D ₂	2	2'-10 $\frac{5}{8}$ "
D ₃	2	7'-6"
E ₁	2	11'-8"
E ₂	2	11'-7"

SHIP. WT. 1185 Lbs.

NOTE: Dimensions and KEE-KLAMP / Pipe sizes shown are examples. See our catalog * for complete information.



Kee Klamp® is a product of Kee Safety, Inc.

U-1828 KEE KLAMP® BAR STOCK RACK

MAX. LOAD PER 1' x 1' x 18' OPENING 4800 Lbs.

KEE KLAMP

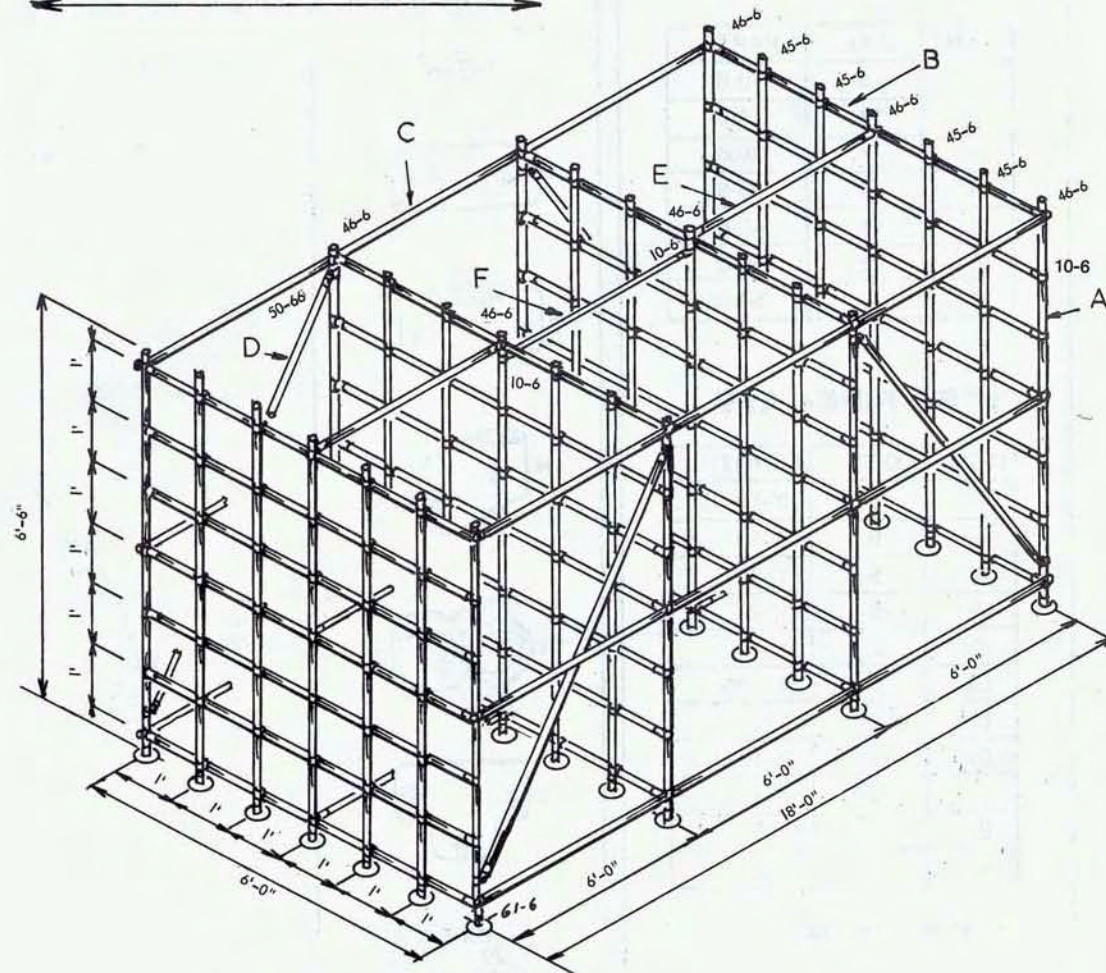
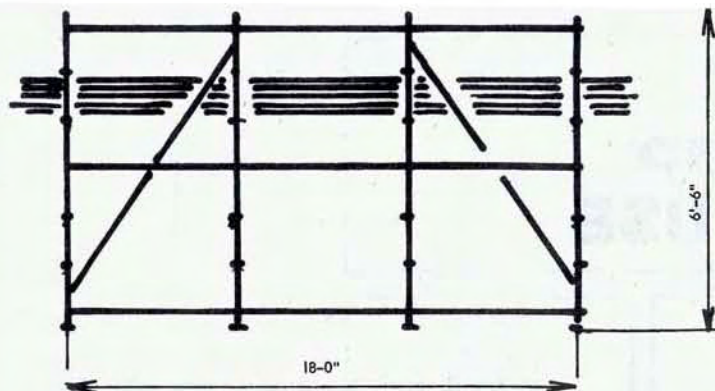
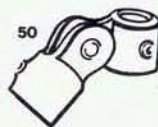
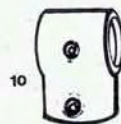
ITEM	Q'TY	PART
1	36	10-6
2	128	45-6
3	36	46-6
4	28	61-6
5	8	50-66

1" S.I. PIPE BLACK

ITEM	Q'TY	LENGTH
A	28	6'-6"
B	28	5'-10 $\frac{5}{8}$ "
C	6	18'-2"
D	4	7'-9"
E	6	5'-9"
F	2	5'-10 $\frac{5}{8}$ "

SHIP. WT. 1050 Lbs.

NOTE: Dimensions and KEE-KLAMP / Pipe sizes shown are examples. See our catalog for complete information.



Kee Klamp® is a product of Kee Safety, Inc.

U-1829 KEE KLAMP® PALLET RACK

MAX. LOAD PER 42" x 48" PALLET 1900 Lbs.

KEE KLAMP

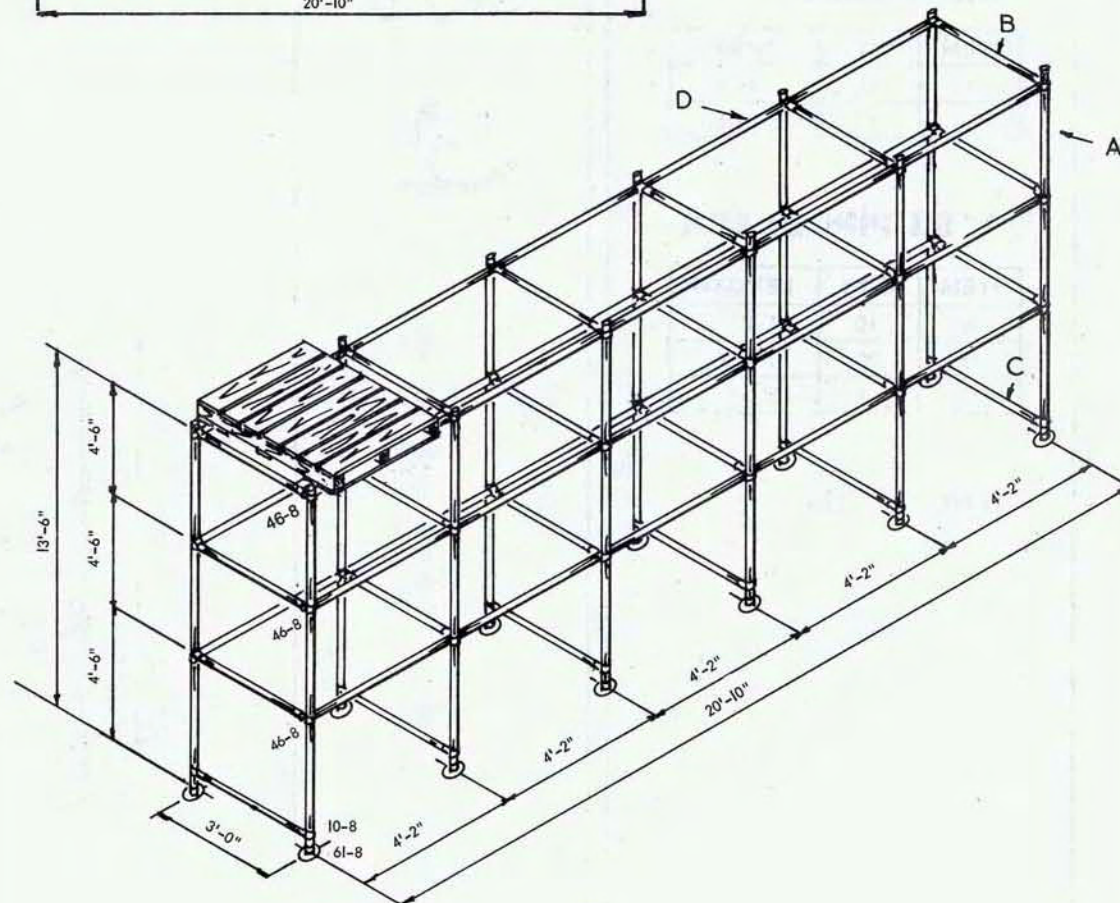
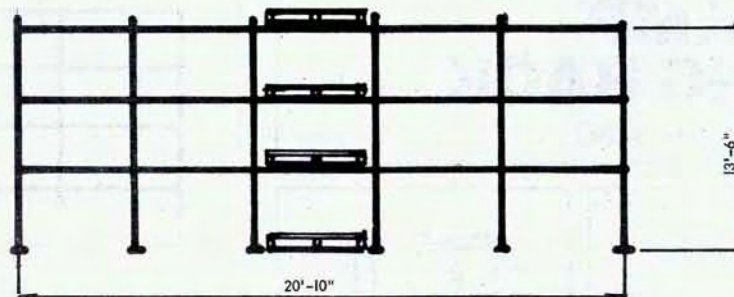
ITEM	Q'TY	PART
1	12	10-8
2	36	46-8
3	12	61-8

1½" S.I. PIPE BLACK

ITEM	Q'TY	LENGTH
A	12	13'-8"
B	18	2'-5¾"
C	6	2'-10⅞"
D	6	21'-0½"

SHIP. WT. 1015 Lbs.

NOTE: Dimensions and KEE-KLAMP / Pipe sizes shown are examples. See our catalog for complete information.



Kee Klamp® is a product of Kee Safety, Inc.

U-1830 KEE KLAMP® SHELVING RACK

MAX. LOAD PER 4' x 4' SHELF 1000 Lbs.

KEE KLAMP

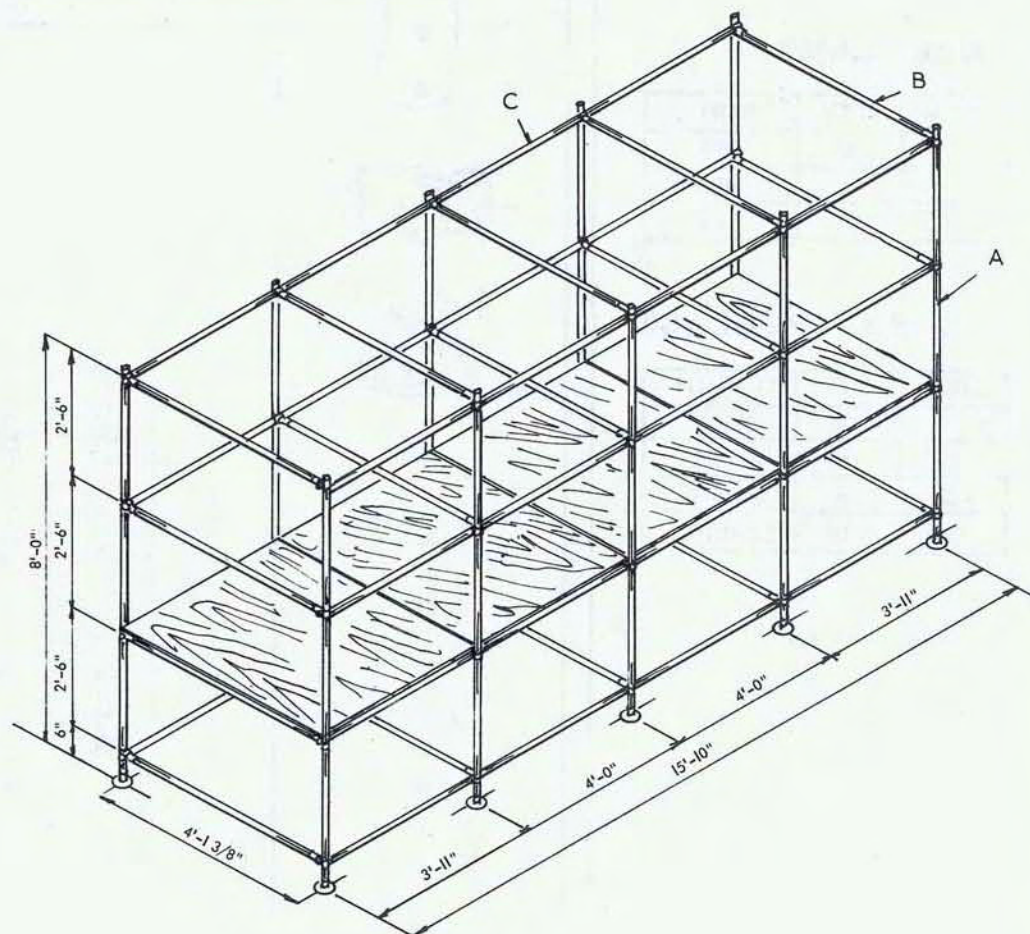
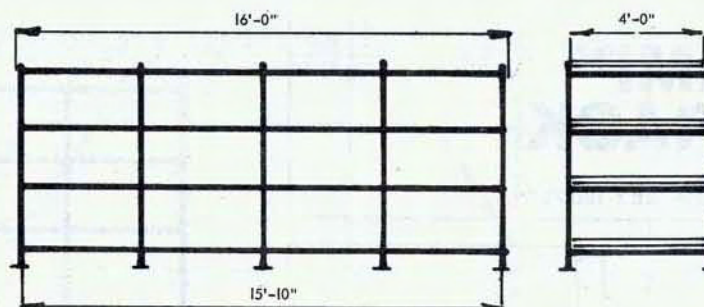
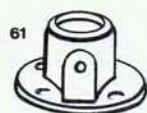
ITEM	Q'TY	PART
1	40	46-6
2	10	61-6

1" S.I. PIPE BLACK

ITEM	Q'TY	LENGTH
A	10	8'-2"
B	20	3'-8 ⁷ / ₈ "
C	8	16'-0"

SHIP. WT. 510 Lbs.

NOTE: Dimensions and KEE-KLAMP / Pipe sizes shown are examples. See our catalog for complete information.



Kee Klamp® is a product of Kee Safety, Inc.

U-1831 KEE KLAMP® DRUM RACK

MAX. LOAD PER 2'-4" x 4'-11" SHELF 1500 Lbs.

KEE KLAMP

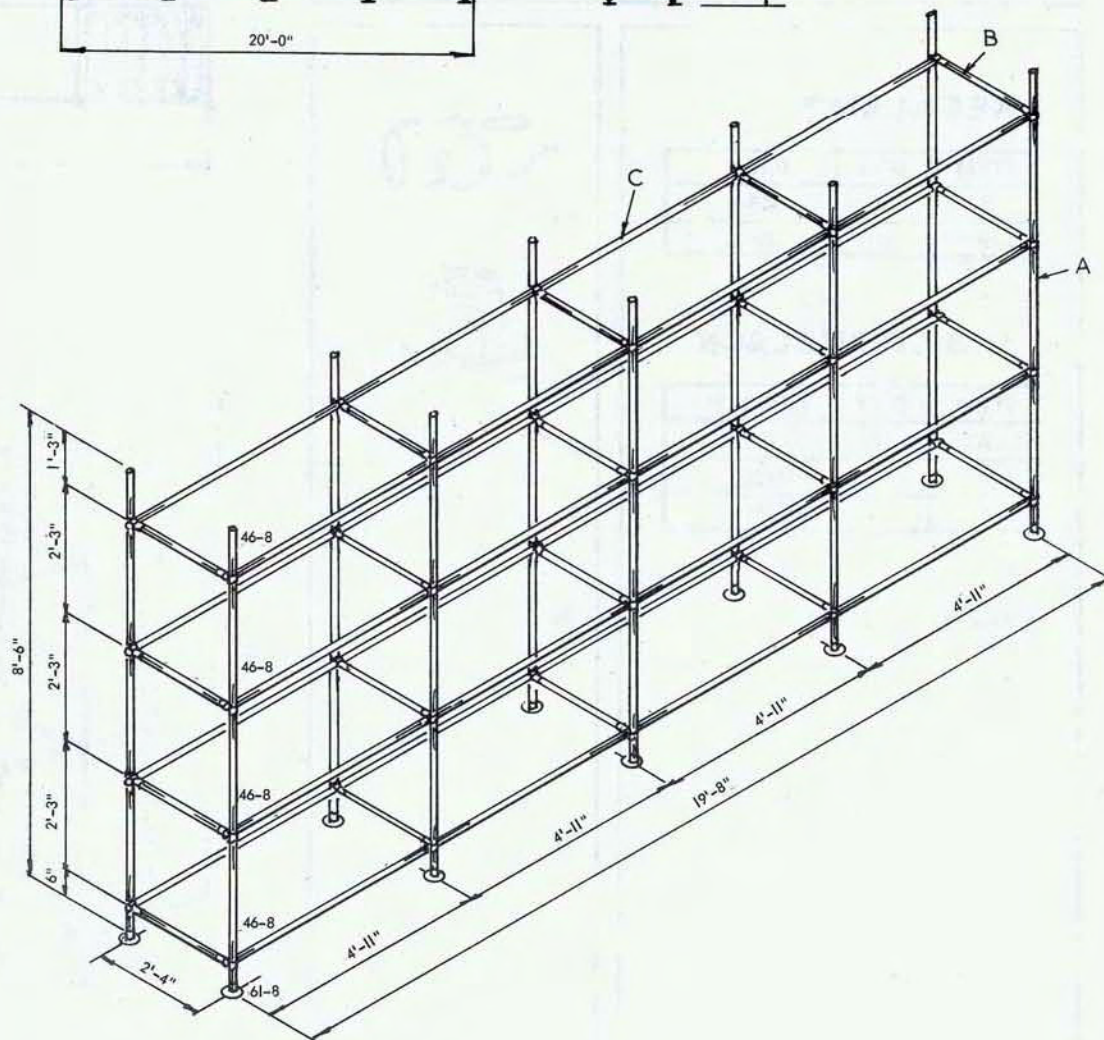
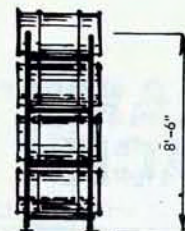
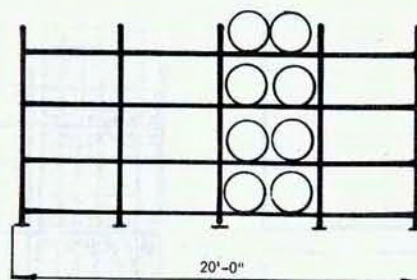
ITEM	Q'TY	PART
1	40	46-8
2	10	61-8

1½" S.I. PIPE BLACK

ITEM	Q'TY	LENGTH
A	10	8'-6"
B	20	1'-9¾"
C	8	19'-10¾"

SHIP. WT. 805 Lbs.

NOTE: Dimensions and KEE-KLAMP / Pipe sizes shown are examples. See our catalog for complete information.



Kee Klamp® is a product of Kee Safety, Inc.

U-1833 KEE KLAMP® TIRE RACK

MAX. LOAD PER 2' x 5'-3" SHELF 800 Lbs.

KEE KLAMP

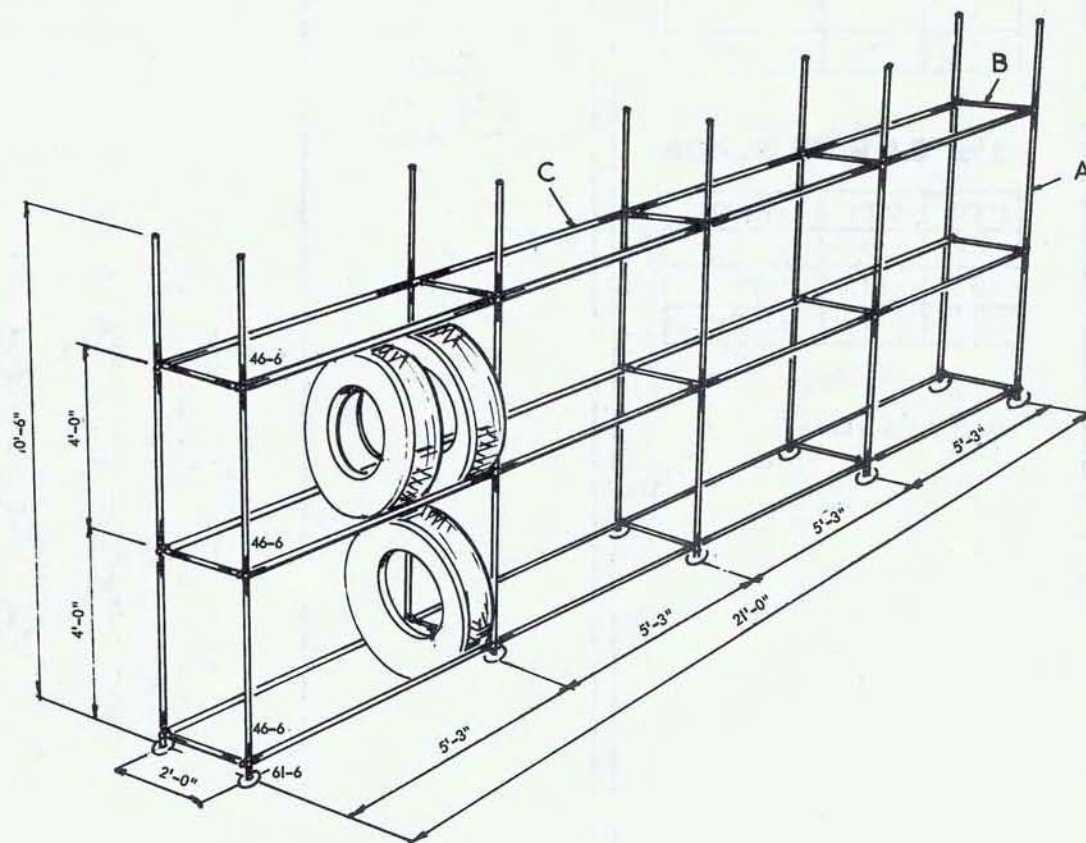
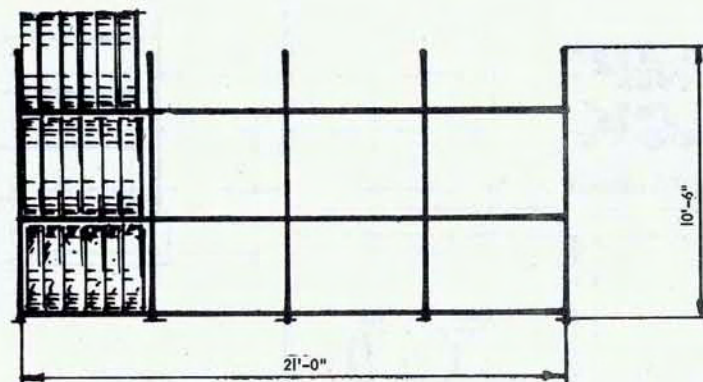
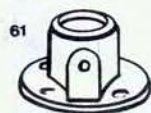
ITEM	Q'TY	PART
1	30	46-6
2	10	61-6

1" S.I. PIPE BLACK

ITEM	Q'TY	LENGTH
A	10	10'-6"
B	15	1'-7½"
C	6	21'-2"

SHIP. WT. 460 Lbs.

NOTE: Dimensions and KEE-KLAMP / Pipe sizes shown are examples. See our catalog for complete information.



Kee Klamp® is a product of Kee Safety, Inc.

U-1834 KEE KLAMP® GARMENT RACK

MAX. LOAD PER 7'-0" SPAN 300 Lbs.

KEE KLAMP

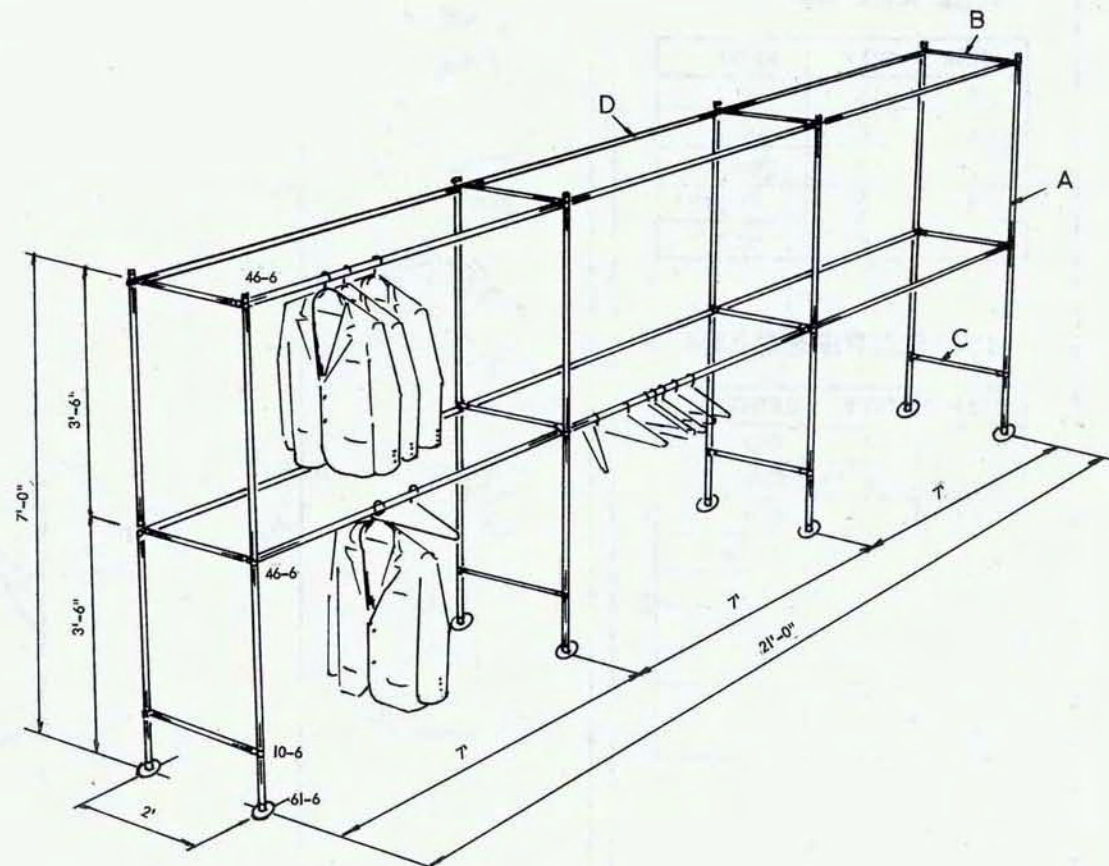
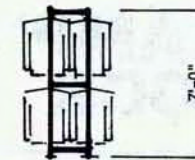
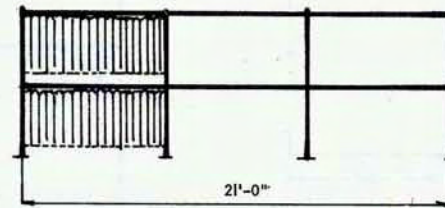
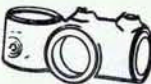
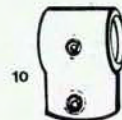
ITEM	Q'TY	PART
1	8	10-6
2	16	46-6
3	8	61-6

1" S.I. PIPE BLACK

ITEM	Q'TY	LENGTH
A	8	7'-2"
B	8	1'-7½"
C	4	1'-10⅝"
D	4	21'-2"

SHIP. WT. 190 Lbs.

NOTE: Dimensions and KEE-KLAMP / Pipe sizes shown are examples. See our catalog for complete information.



Kee Klamp® is a product of Kee Safety, Inc.

U-1835 KEE KLAMP® BOAT DOCK

KEE KLAMP

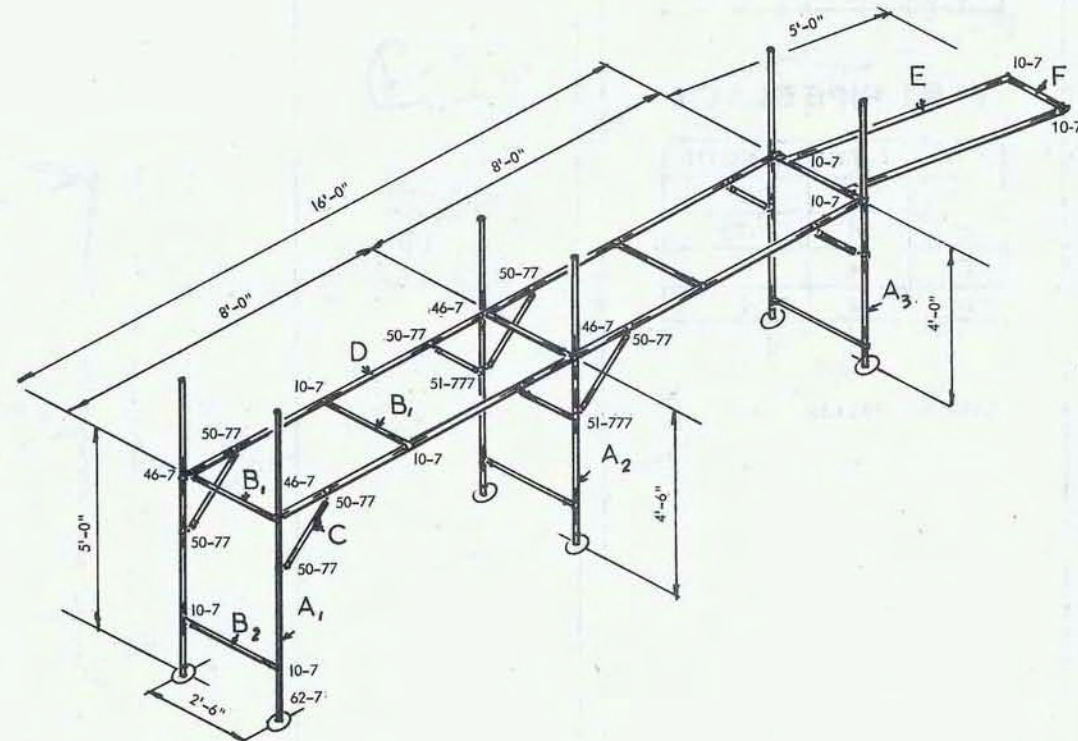
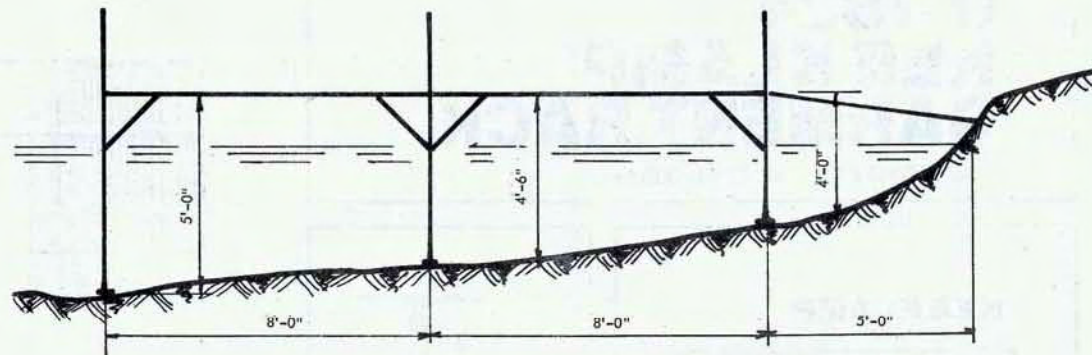
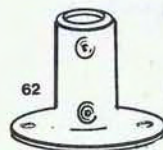
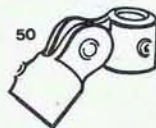
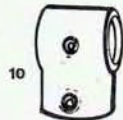
ITEM	Q'TY	PART
1	14	10-7
2	6	46-7
3	12	50-77
4	2	51-777
5	6	62-7

1 1/4" S.I. PIPE GALV

ITEM	Q'TY	LENGTH
A ₁	2	7'-0"
A ₂	2	6'-6"
A ₃	2	6'-0"
B ₁	5	2'-0 1/2"
B ₂	3	2'-4 3/8"
C	8	1'-6"
D	2	16'-2"
E	2	5'-0"
F	1	1'-8 1/2"

SHIP. WT. 330 Lbs.

NOTE: Dimensions and KEE-KLAMP / Pipe sizes shown are examples. See our catalog for complete information.



Kee Klamp® is a product of Kee Safety, Inc.

U-1837 KEE KLAMP® BENCH FRAME

KEE KLAMP

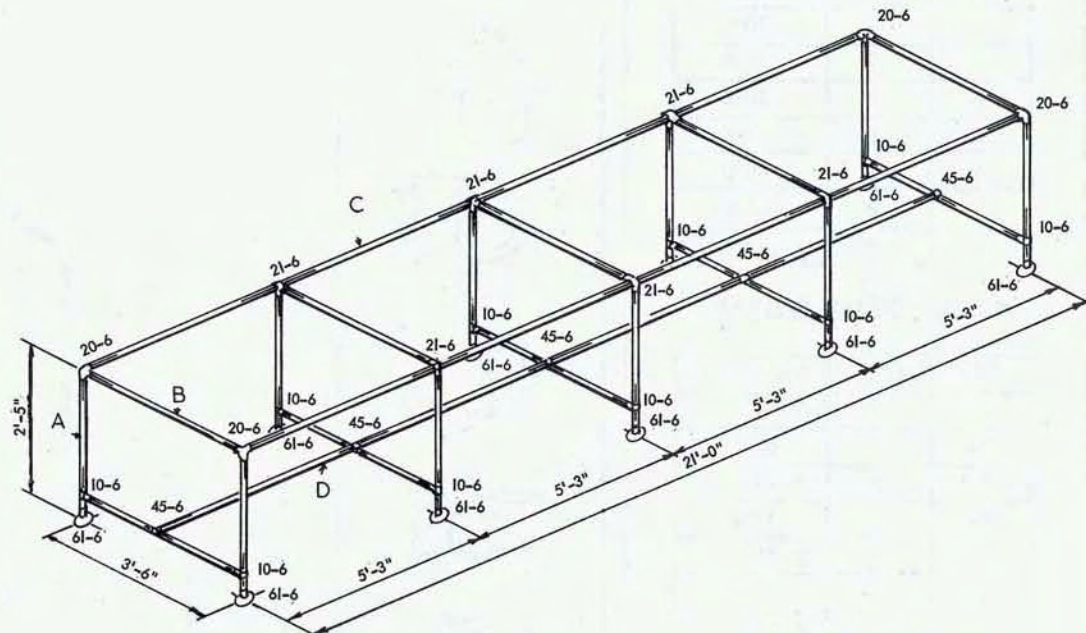
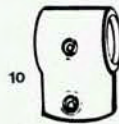
ITEM	Q'TY	PART
1	10	10-6
2	4	20-6
3	6	21-6
4	5	45-6
5	10	61-6

1" S.I. PIPE BLACK

ITEM	Q'TY	LENGTH
A	10	2'-4"
B	10	3'-4 $\frac{5}{8}$ "
C	2	20'-10 $\frac{5}{8}$ "
D	1	21'-2"

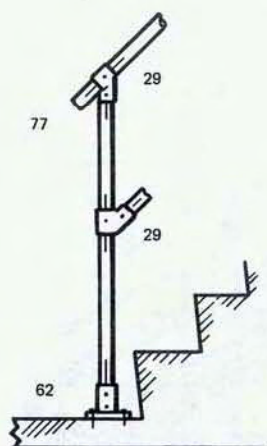
SHIP. WT. 230 Lbs.

NOTE: Dimensions and KEE-KLAMP / Pipe sizes shown are examples. See our catalog for complete information.

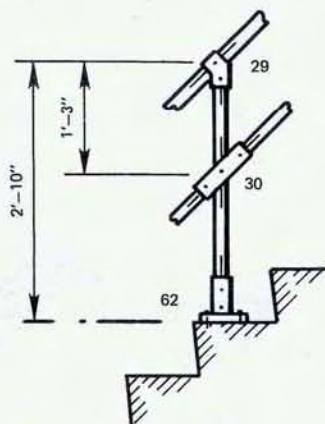


Kee Klamp® is a product of Kee Safety, Inc.

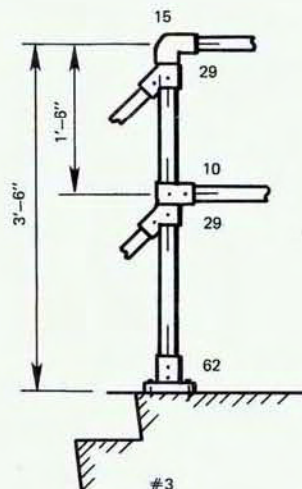
U-1839 KEE KLAMP® POSTS FOR RAILING



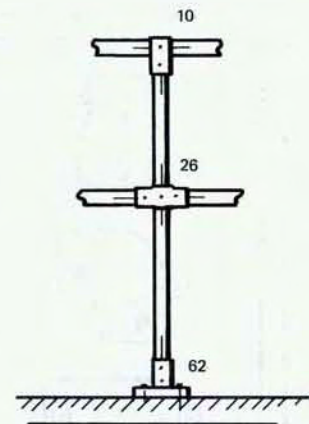
#1



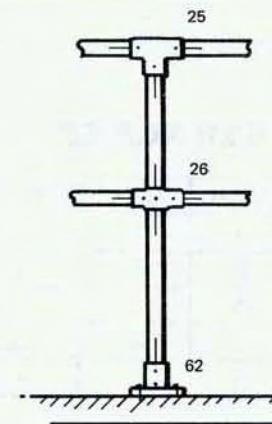
#2



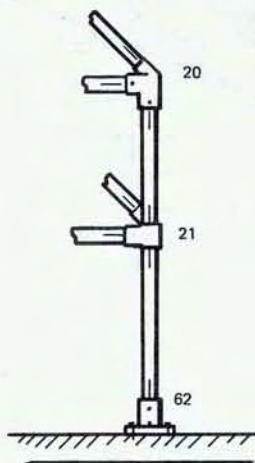
#3



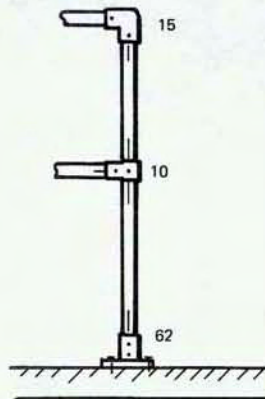
#4



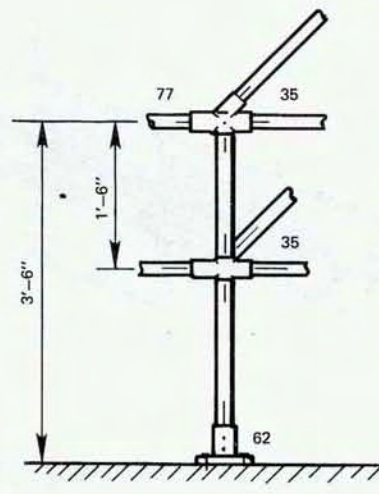
#5



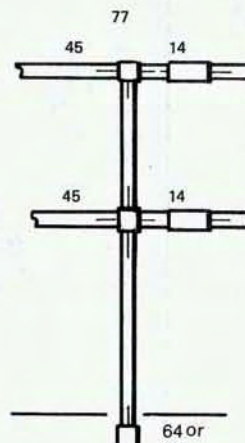
#6



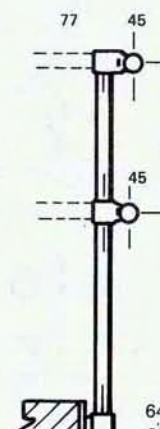
#7



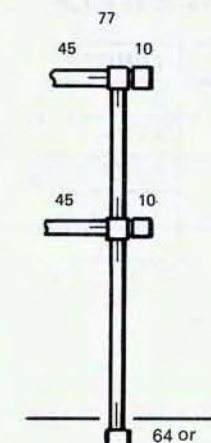
#8



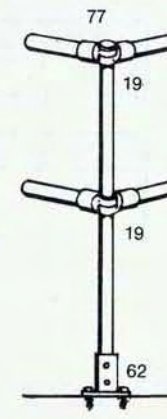
#9



64
or
68



#10



#11

NOTE: Dimensions and KEE-KLAMP / Pipe sizes shown are examples. See our catalog for complete information.

Kee Klamp® is a product of Kee Safety, Inc.

U-1841 KEE KLAMP® RAILING

KEE KLAMP

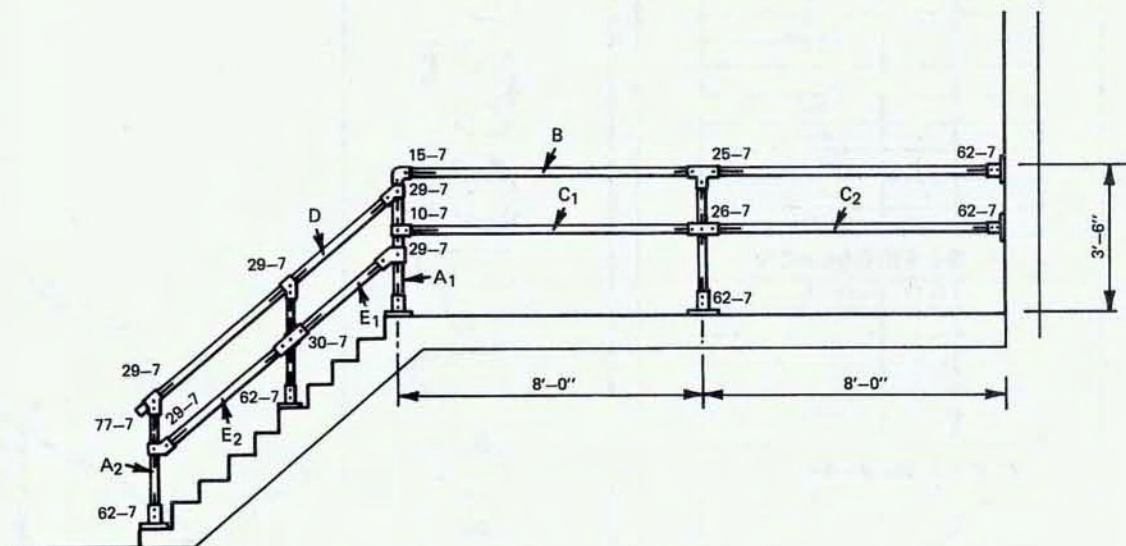
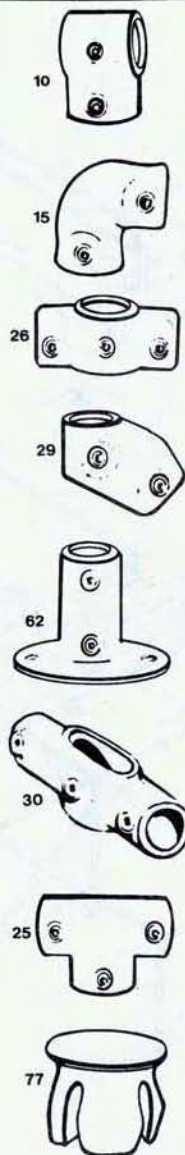
ITEM	Q'TY	PART
1	1	10-7
2	1	15-7
3	1	26-7
4	5	29-7
5	6	62-7
6	1	30-7
7	1	25-7
8	1	77-7

1 1/4" S.I. PIPE GALV

ITEM	Q'TY	LENGTH
A ₁	2	3'-4"
A ₂	2	3'-0"
B	1	15'-11"
C ₁	1	7'-10 3/8"
C ₂	1	7'-11"
D	1	8'-9"
E ₁	1	3'-3"
E ₂	1	4'-3"

SHIP. WT. 150 Lbs.

NOTE: Dimensions and KEE-KLAMP / Pipe sizes shown are examples. See our catalog for complete information.



Kee Klamp® is a product of Kee Safety, Inc.

U-1840 KEE KLAMP® RAILING FOR CATWALK

KEE KLAMP

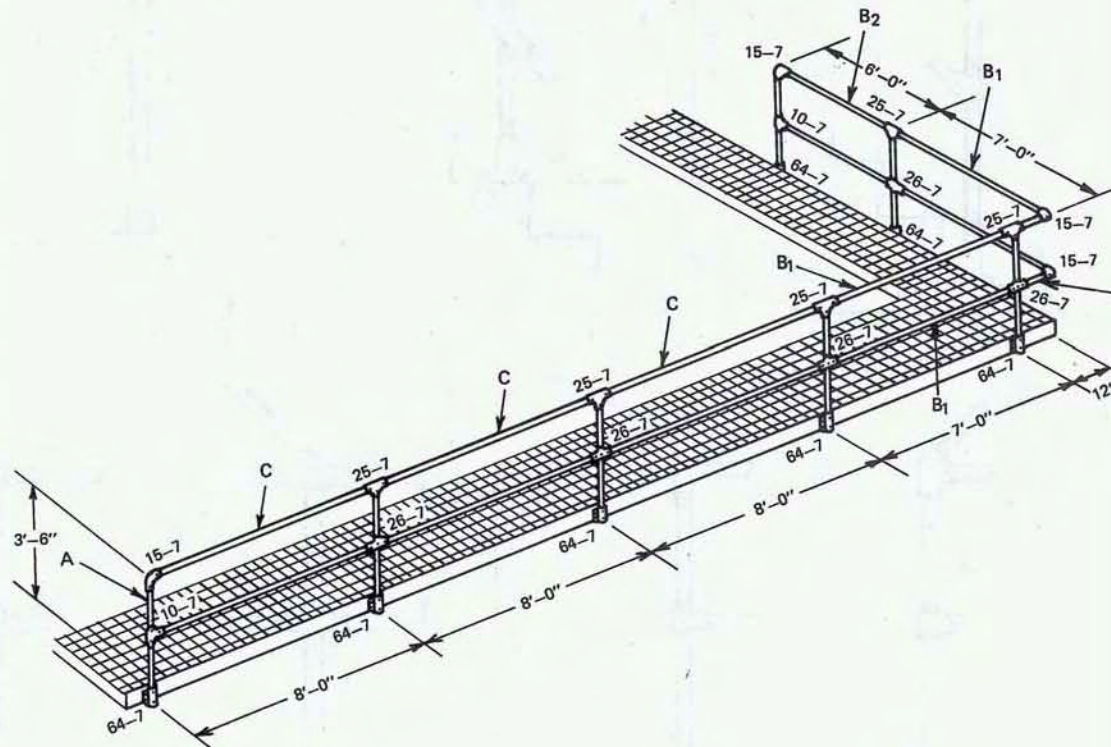
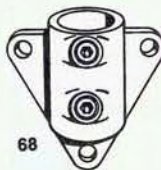
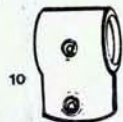
ITEM	Q'TY	PART
1	2	10-7
2	2	15-7
3	4	25-7
4	4	26-7
5	7	64-7

1 1/4" S.I. PIPE GALV

ITEM	Q'TY	LENGTH
A	7	3'- 8"
B ₁	2	6'-10 3/8"
C	6	7'-10 3/8"
B ₂	4	5'-10 3/8"
D	2	0'-10 3/8"

SHIP WT 300 Lbs.

NOTE: Dimensions and KEE-KLAMP / Pipe sizes shown are examples. See our catalog for complete information.



Note: 68-7 may be substituted for 64-7

Kee Klamp® is a product of Kee Safety, Inc.

U-1844 KEE KLAMP® AWNING FRAME

KEE KLAMP

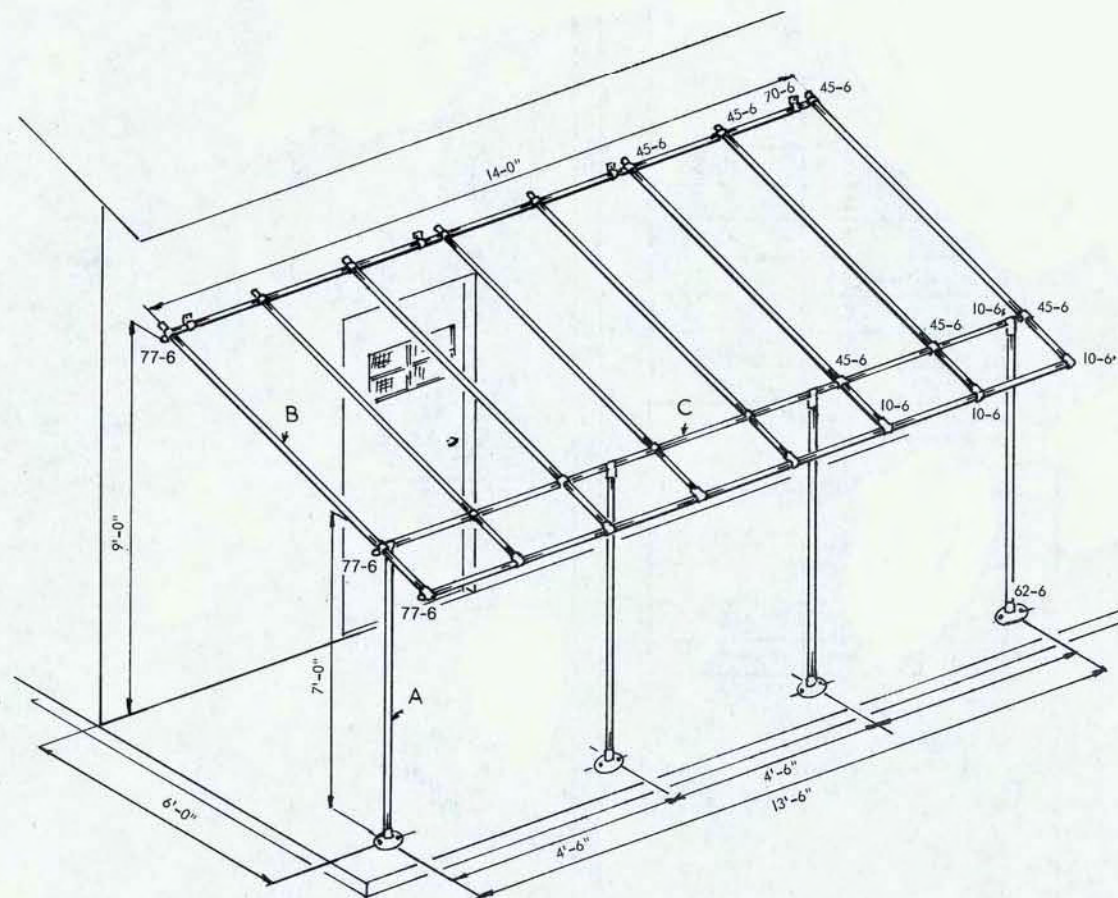
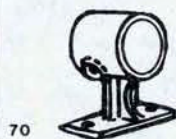
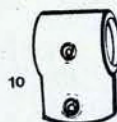
ITEM	Q'TY	PART
1	12	10-6
2	16	45-6
3	4	62-6
4	4	70-6
5	6	77-6

1" S.I. PIPE GALV

ITEM	Q'TY	LENGTH
A	4	6'-11"
B	8	7'-6"
C	3	14'-2"

SHIP. WT. 250 Lbs.

NOTE: Dimensions and KEE-KLAMP / Pipe sizes shown are examples. See our catalog for complete information.



Kee Klamp® is a product of Kee Safety, Inc.

U-1847 KEE KLAMP® PICK-UP TRUCK FRAME

KEE KLAMP

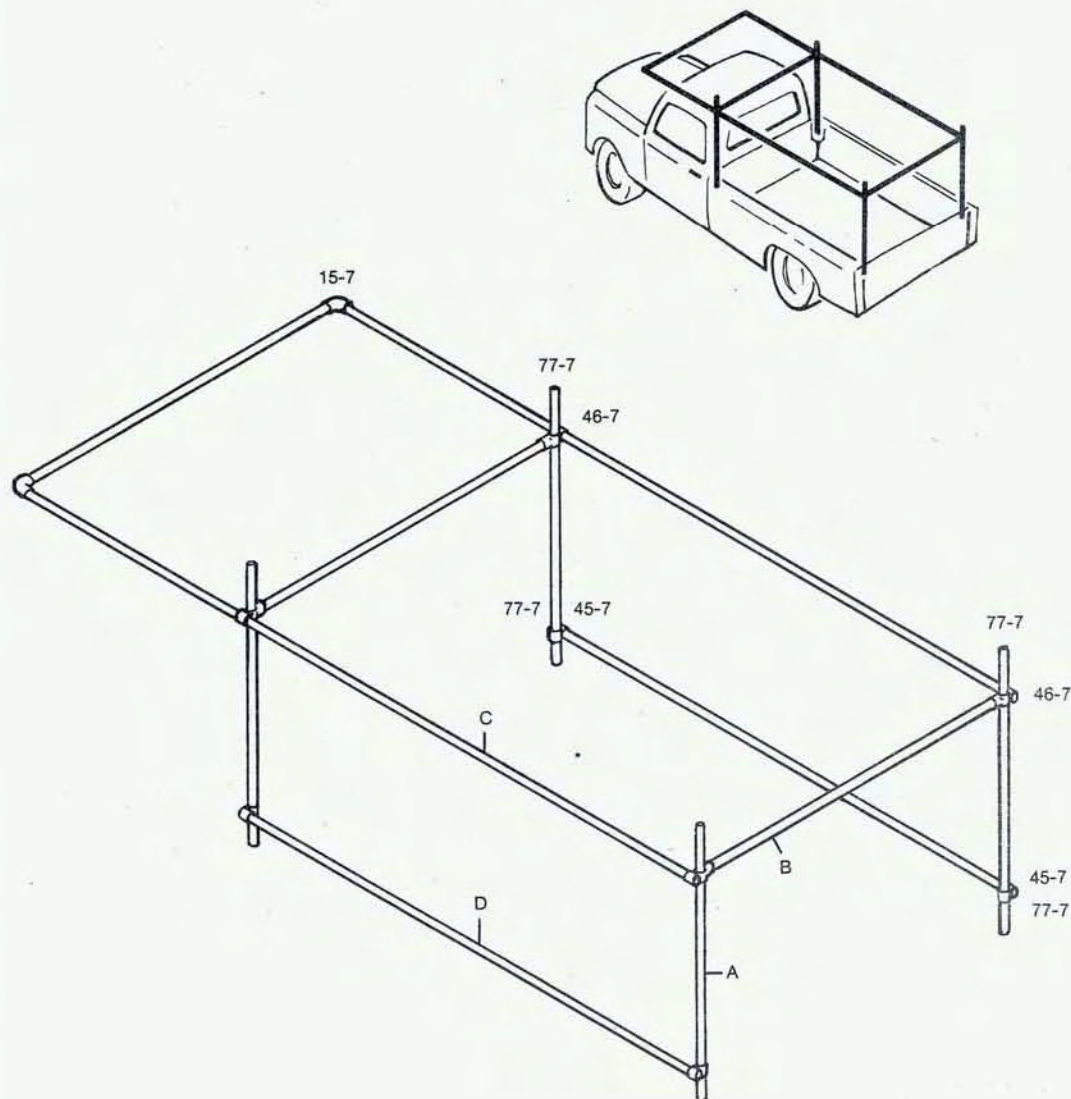
ITEM	Q'TY	PART
1	2	15-7
2	4	45-7
3	4	46-7
4	10	77-7

1 1/4" S.I. PIPE GALV

ITEM	Q'TY	LENGTH
A	4	4'-6"
B	3	5'-0"
C	2	12'-0"
D	2	8'-0"

SHIP. WT. 180 Lbs.

NOTE: Dimensions and KEE-KLAMP / Pipe sizes shown are examples. See our catalog for complete information.



Kee Klamp® is a product of Kee Safety, Inc.

U-1846A KEE KLAMP® SHADE STRUCTURE

KEE KLAMP

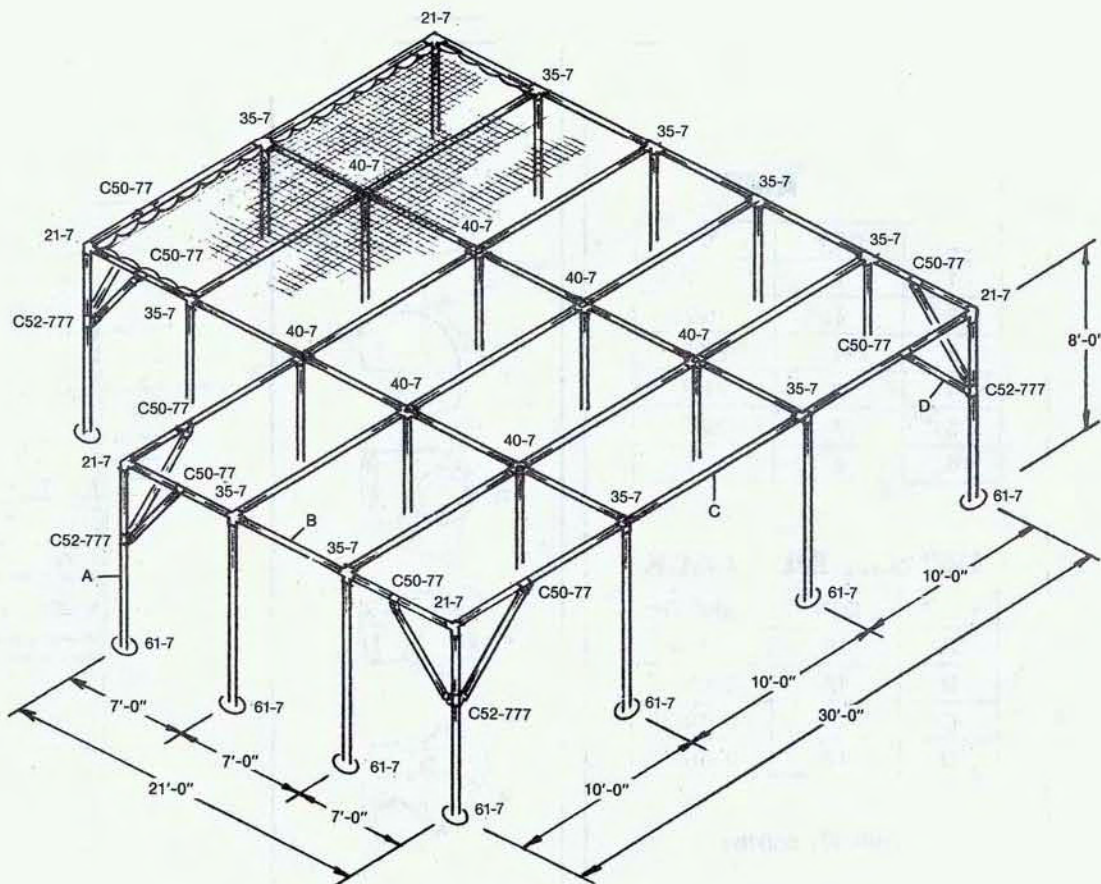
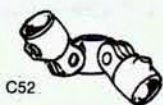
ITEM	QTY	PART
1	5	21-7
2	10	35-7
3	22	61-7
4	7	40-7
5	12	C50-77
6	6	C52-777

1 1/4" S.I. PIPE BLACK

ITEM	QTY	LENGTH
A	22	8'-0"
B	18	6'-10 3/8"
C	16	9'-10 3/8"
D	12	5'-7 3/4"

SHIP. WT. 1375 lbs.

NOTE: Dimensions and KEE-KLAMP / Pipe sizes shown are examples. See our catalog for complete information.



Kee Klamp® is a product of Kee Safety, Inc.

U-1845A KEE KLAMP® LIGHTING GRID

KEE KLAMP

ITEM	QTY	PART
1	1	10-7
2	1	15-7
3	4	20-7
4	11	21-7
5	7	35-7
6	6	40-7

1 1/4" S.I. PIPE BLACK

ITEM	QTY	LENGTH
A	18	7'-10 3/8"
B	15	3'-0"
C	1	19'-10 3/8"
D	12	3'-10 3/8"

SHIP. WT. 650 lbs.

NOTE: Dimensions and KEE-KLAMP / Pipe sizes shown are examples. See our catalog for complete information.



10



15



20



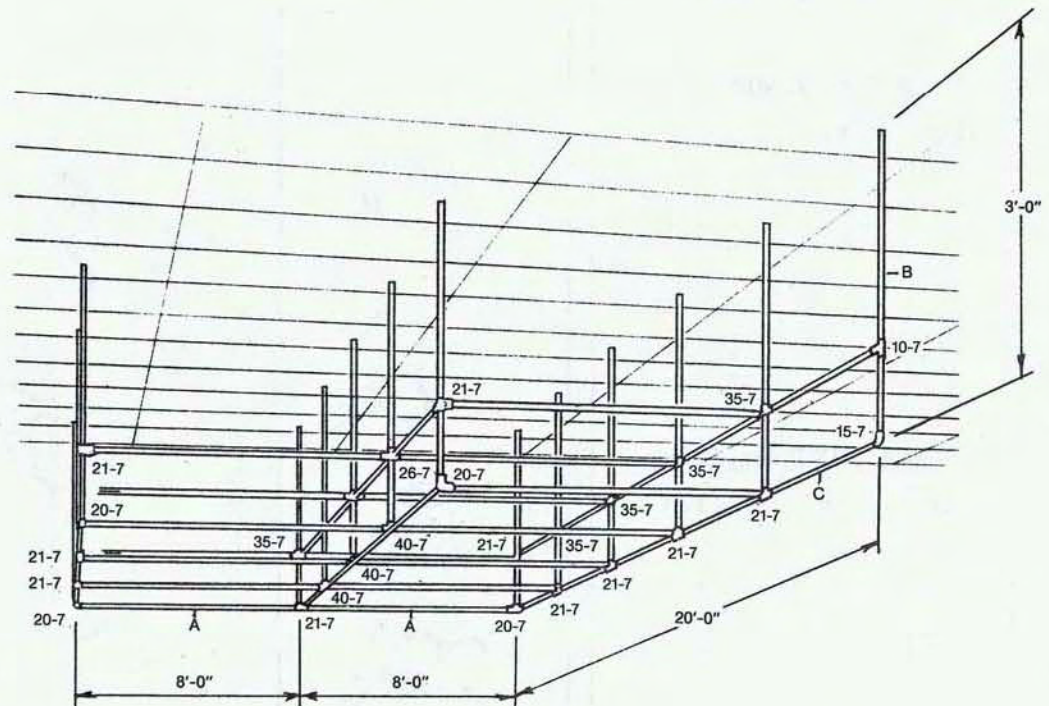
21



35



40



NOTE: For connecting grid system to overhead construction, either our Kee Klamp product line can be used. Please contact us for assistance.

Kee Klamp® is a product of Kee Safety, Inc.

U-1843 KEE KLAMP® RAILING

KEE KLAMP

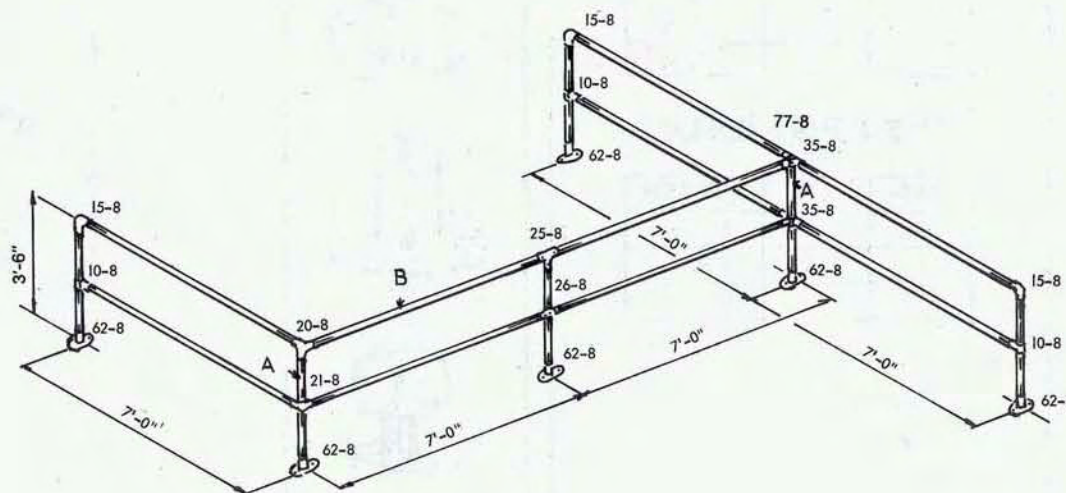
ITEM	Q'TY	PART
1	3	10-8
2	3	15-8
3	1	20-8
4	1	21-8
5	1	25-8
6	1	26-8
7	2	35-8
8	6	62-8
9	1	77-8

1½" S.I. PIPE GALV

ITEM	Q'TY	LENGTH
A	5	3'-4"
A ₁	1	3'-5¾"
B	10	6'-10"

SHIP. WT. 320 Lbs.

NOTE: Dimensions and KEE-KLAMP / Pipe sizes shown are examples. See our catalog for complete information.



Kee Klamp® is a product of Kee Safety, Inc.

U-1842 KEE KLAMP® ELEVATED STORAGE PLATFORM

MAX. LOAD PER SQ. FT. 65 Lbs.

KEE KLAMP

ITEM	Q'TY	PART
1	4	10-8
2	12	10-9
3	4	15-8
4	3	20-8
5	3	21-8
6	4	25-8
7	4	26-8
8	2	50-8M
9	20	46-9
10	8	50-99
11	11	62-8
12	16	61-9

1½" S.I. PIPE BLACK

ITEM	Q'TY	LENGTH
A	11	3'-4"
B ₁	4	3'-10"
B ₂	6	6'-10"
B ₃	4	4'-7"
B ₄	4	7'-10"

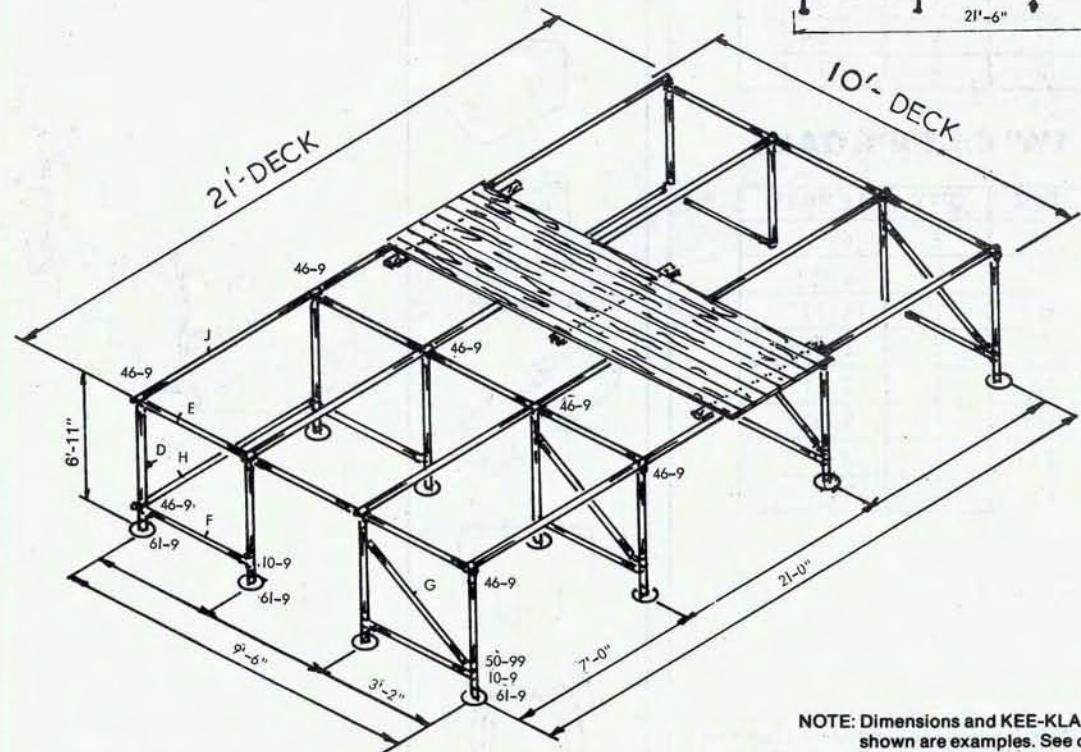
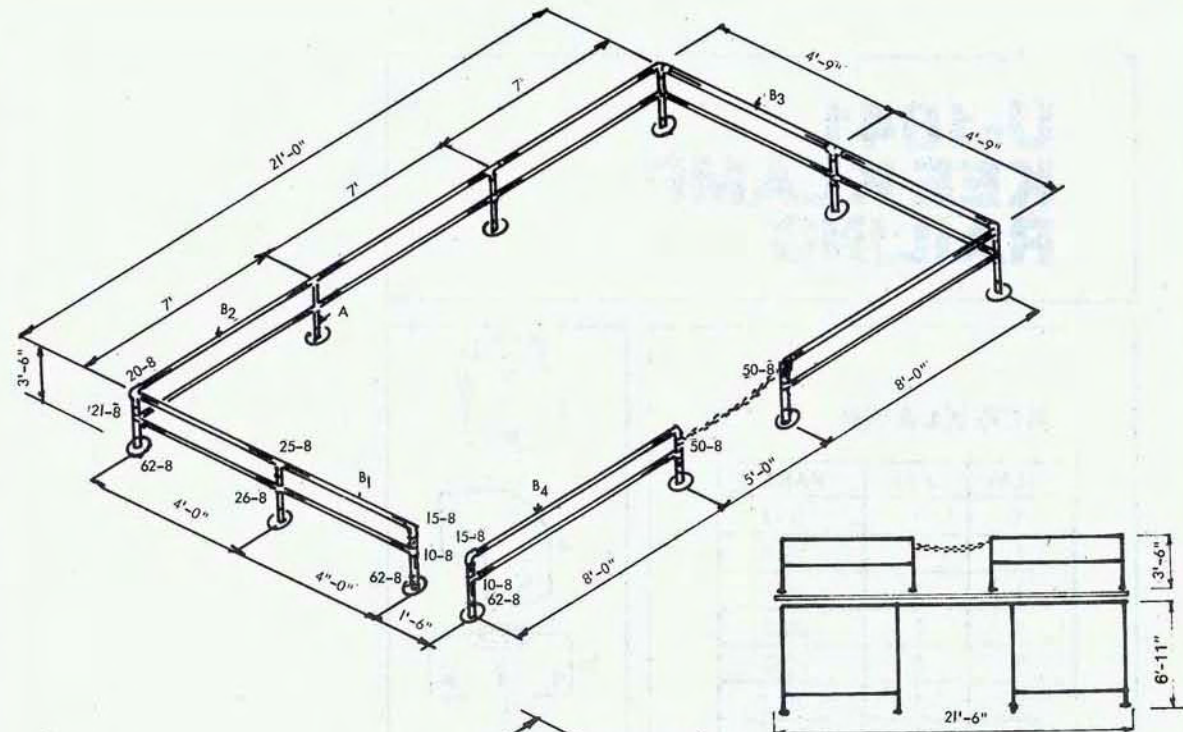
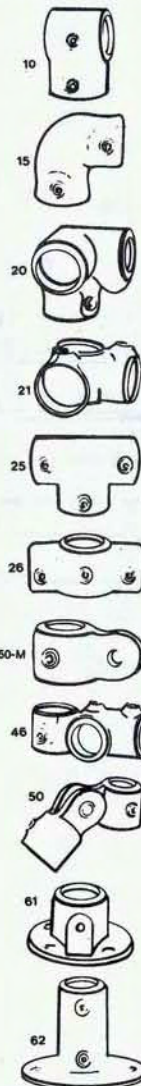
2" S.I. PIPE BLACK

ITEM	Q'TY	LENGTH
D	16	6'-7"
E	4	9'-9"
F	8	2'-11½"
G	4	5'-6"
H	2	7'-3"
J	4	21'-3"

ITEM	Q'TY	MATERIAL
O	46	2" x 6" x 10'-0" FIR
P	6	2" x 4" x 12'-0" FIR
S	5 lbs.	¾" NAILS
T	1	¾" PASSING LING CHAIN 5'-0" LG.

SHIP. WT. 1) FRAME 1719 Lbs.

2) DECK 1030 Lbs.



NOTE: Dimensions and KEE-KLAMP / Pipe sizes shown are examples. See our catalog for complete information.

Kee Klamp® is a product of Kee Safety, Inc.



Kee Klamp, Kee Lite, Kee Stainless, KeeGuard, Kee Dome, Kee Hatch, Kee Mark, Kee Access, KwikKit and Kee Projects are all registered trademarks of Kee Safety Ltd, Beam Clamp, and Box Bolt are all registered trademarks of Access Technologies Ltd, a subsidiary of Kee Safety International Ltd. While every effort has been made to ensure the accuracy of the information contained in this brochure, Kee Safety, Inc cannot be held responsible for any errors or omissions. Kee Safety, Inc reserves the right to alter or withdraw products without prior notice. Kee Safety, Inc does not accept responsibility for any loss or damage arising from improper use of its products.
Copyright 2008 Kee Safety, Inc. All Rights Reserved.